



# FABER-CASTELL

*since 1761*



Pitt Artist Pen





### Meeting the highest standards

Founded in 1761, the Faber-Castell family business is now into its eighth generation. It has grown from a small handicraft business to an international corporate group with 14 production sites, 25 sales companies and about 7.500 employees worldwide.

As one of the leading companies in the world for wood-cased pencils, Faber-Castell's Art & Graphic range enjoys a most prestigious reputation among artists and hobbyists. High-quality pigments maintain guaranteed maximum light-fastness and brilliant colour intensity for generations. All products are based on the same colour numbering system, ensuring unlimited combinations and designs.

The quality of Faber-Castell art materials has been prized by eminent personalities from Vincent van Gogh to Karl Lagerfeld. In addition to manufacturing art materials, Faber-Castell has always been committed to the promotion of developing artists.



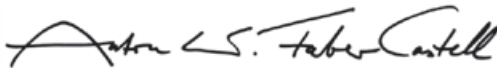




## Faber-Castell supports visual arts

The latest effort, the **Faber-Castell International Drawing Award**, was launched in 2012. It is awarded every three years.

“Faber-Castell has a long tradition of supporting the visual arts, and for us as globally established manufacturers of writing and drawing instruments, it is entirely consistent that we place particular focus on the medium of drawing. [...] an extremely diverse and genuinely authentic medium [drawing] that is often unfairly cast in the shadow of other genres such as painting, sculpture and video. Even though drawing has emancipated itself [...] and has firmly established its position as an independent art form in the 21st century, it is still widely regarded as a “quiet medium”. This is despite the fact that the immediacy and subtlety of a drawing give the viewer a tangible sense of proximity to its creator. Almost all artists work with pen, pencil and paper, even if it is just to jot down their initial creative impulse for a work.”



Excerpt from a speech given by Count Anton Wolfgang von Faber-Castell at the award ceremony for the **Faber-Castell International Drawing Award 2012**





# Pitt Artist Pen – Premium quality India ink pen

---



## Outstanding product features

Highly pigmented water-based India ink

Lightfast and odourless

Waterproof when dry

Does not bleed through paper

Available in different nib sizes for linear and extensive drawing

Suitable for writing, sketching and drawing

Usable on numerous surfaces like paper, canvas, wood

Excellent for Mixed Media techniques

## Brush

---



Pitt Artist Pen **brush**  
available in 60 colours  
(colour chart on page 22-23)



Pitt Artist Pen **soft brush**  
available in black

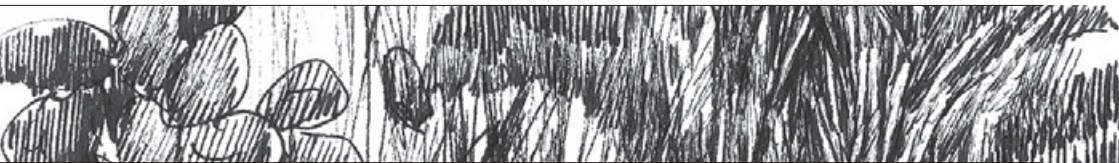
## Big brush

---



Pitt Artist Pen **big brush**  
available in black





---

## Fineliner

Pitt Artist Pen M  
available in 3 colours



Pitt Artist Pen F  
available in 3 colours



Pitt Artist Pen S  
available in 11 colours



Pitt Artist Pen XS  
available in black



---

## Bullet Nib

Pitt Artist Pen  
available in black



Pitt Artist Pen **metallic**  
available in 6 colours



---

## Calligraphy

Pitt Artist Pen **calligraphy**  
available in 3 colours



Pitt Artist Pen **soft calligraphy**  
available in black





# Pitt Artist Pen brush

---



## Flexibility in best shape



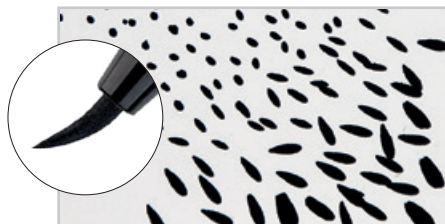
The Pitt Artist Pen brush has a flexible brush nib. By changing the angular position and varying the pressure it is possible to create various line widths. Extensive areas can easily be coloured by holding the pen very flatly.



By pressing strongly and dragging the Pitt Artist Pen to the side it is possible to create broad lines. By lowering the pressure there will be a seamless transition into a fine line.



By squashing the flexible brush nib of the Pitt Artist Pen and dabbing the colour onto the surface, numerous structures can be generated. The creation of tree bark, drops, paths or punctual accents depends on the intensity of the coat.



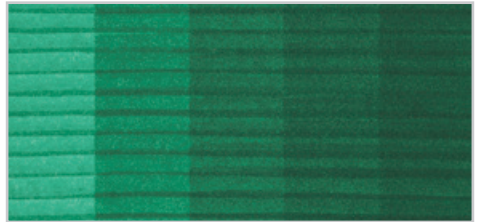


# Techniques



## Colour layering

Colour depth, saturated colours and different levels of brightness are generated by drawing a second or third time over individual areas with the same colour.



## Colour mixing

Brilliant mixed tones and luscious shades are created by layering different colours.



## Watercolour-Effect

The flow of ink changes on wet surfaces and creates watercolour-like effects. Once the colour has dried up, it is water-resistant, permanent and recoatable again.



## Overlayering

Dried up ink is water-resistant and can be overpainted with watercolours or water-colour pencils. The luminosity and depth of colour will remain intensive and stable.





# Pitt Artist Pen Fineliner



Pitt Artist Pen fineliners are available in different line widths. The artist can choose according to his vision from a variety of fineliner sizes, whether it is an extremely fine nib or a 0.7mm line width.





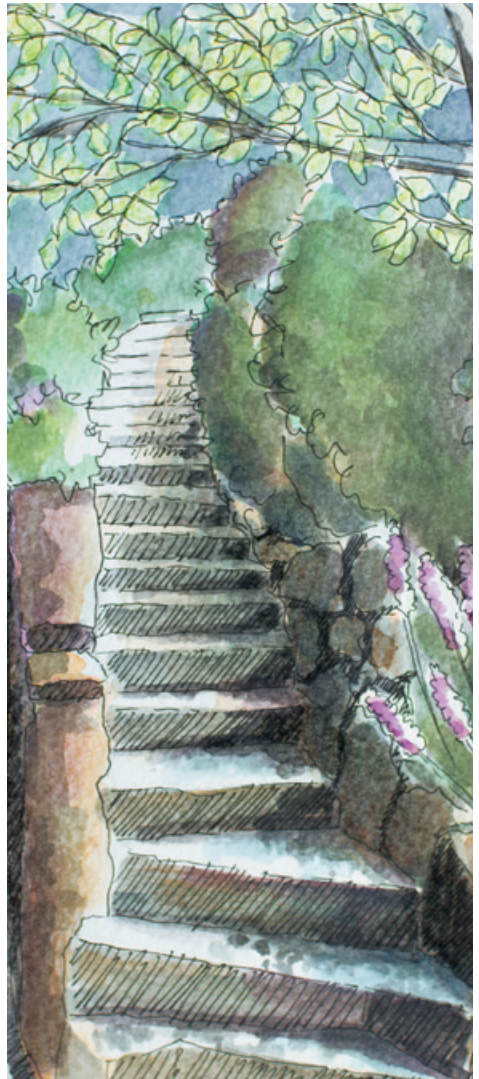
# Mixed Media



After the ink has completely dried up it is water-resistant and can be painted over with other mediums like water- or acrylic colours. The quality of the drawn line remains the same.

The excellent opacity allows the artist to accentuate completely dried up water-colour- or acrylic-paintings with the Pitt Artist Pen.

Pitt Artist Pen + Watercolours





# Rodolfo Sales



Born in São Paulo, Brazil

Artist's name: Grego

Studied visual arts at São Paulo University

Studies Digital Design at Anhembí Morumbi University

[www.fb.com/gregonebr](http://www.fb.com/gregonebr)

## Graffiti + Digital Design

"I love colours but often it is a difficult process to combine them.

The shapes in my artworks are always very dynamic and twisted."

Grego is a lover of Street Art.





Brazil





# Joseph Casapinta

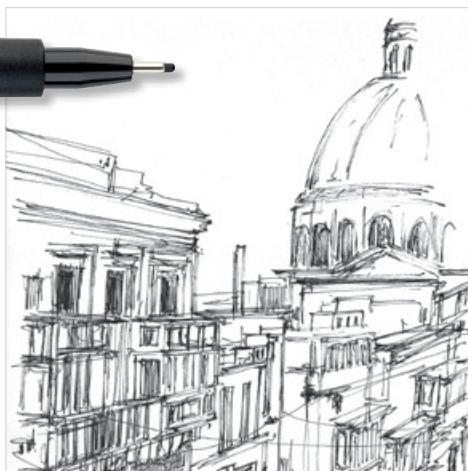


Born in Malta  
Studied at St. Edward's College, Malta  
Drawing course at Paris ABC School of Art  
Maltese artist  
<http://www.josephcasapinta.net>

## Classic India ink drawings



Joseph Casapinta is an excellent graphic artist and illustrator. He is particularly skilled with pen and ink. His impeccable style is rounded off with extremely delicate strokes and a great imagination.





# Malta





# Ale Giorgini



Born in Vicenza, Italy  
Self-taught illustrator and comic artist  
Illustrates for several brands  
His artworks are exhibited at Hero Complex Gallery (Los Angeles) and Bottle-neck Gallery (New York)  
[www.alegiorgini.com](http://www.alegiorgini.com)

## Illustration



“Faber-Castell Pitt Artist Pens are the all-in-one tool for my daily work.”







"The different kinds of nibs give me the possibility to create versatile artworks: for extensive drawings I use the brush nib, the fineliners are great for details. The colour range is perfect to make the illustrations look vivid."





# Chiaki Mori



Born in Chiba, Japan  
Studied illustration at Parsons, The New School for Design, New York  
Freelance illustrator  
<http://windpress71.main.jp/>

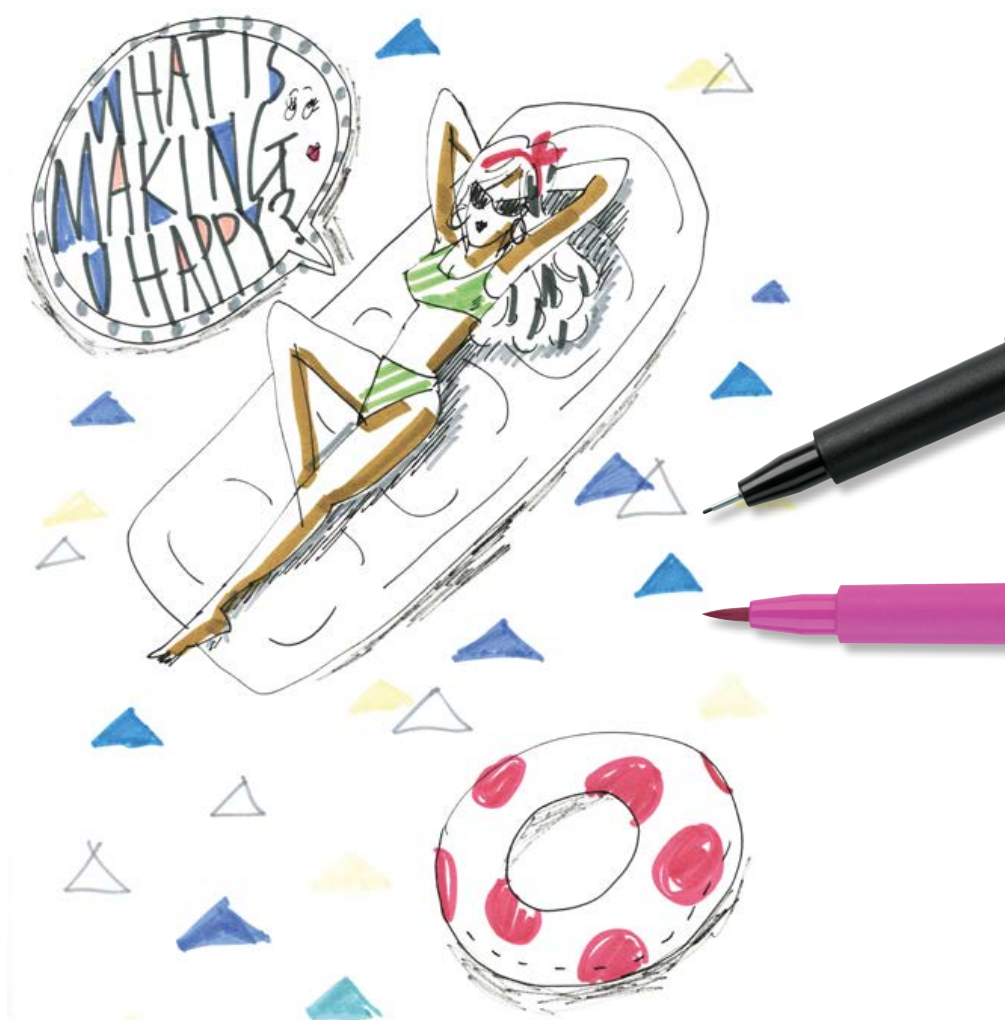
## Illustration

The strong characteristics of Chiaki Moris artwork are simple black and white line-drawings without any background colour or a strong focus on composition. Her artworks have fascinated readers of numerous magazines, books and websites

“I was inspired by Japanese girls’ comics and mangas.”









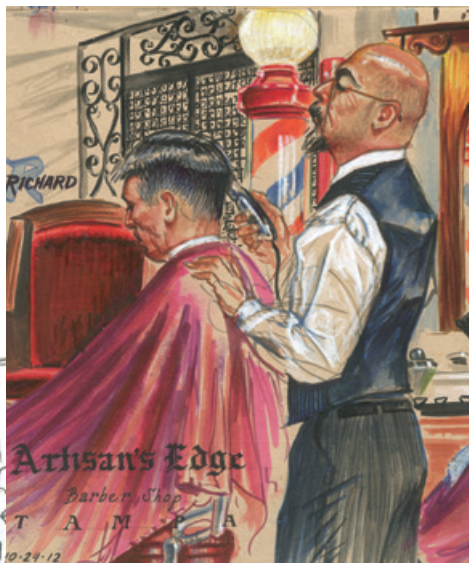
# Don Colley



Born in Phoenix, Arizona, USA  
Studied at Texas University  
Lives in Chicago  
<http://buttnekkiddoodles.com/>

## Illustration

“Pitt Artist Pens contain India ink, which consists of pigment and water. If I work fast, I can blend the colours before they dry. If I had to choose one medium for drawing outside it would be this pen.”



ATLANTA INTERN.  
AIRPORT  
WAITING TO FLY OUT  
TO SAN ANTONIO  
2-18-13





USA





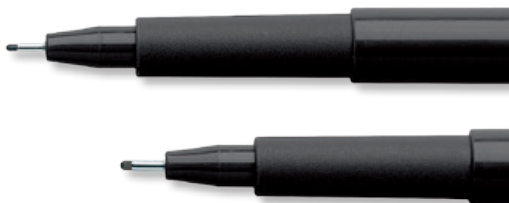
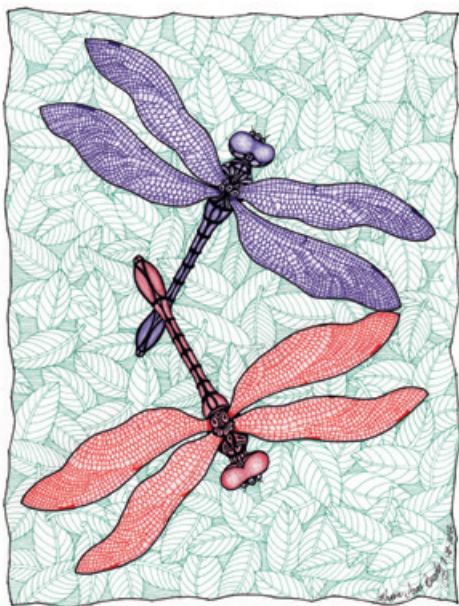
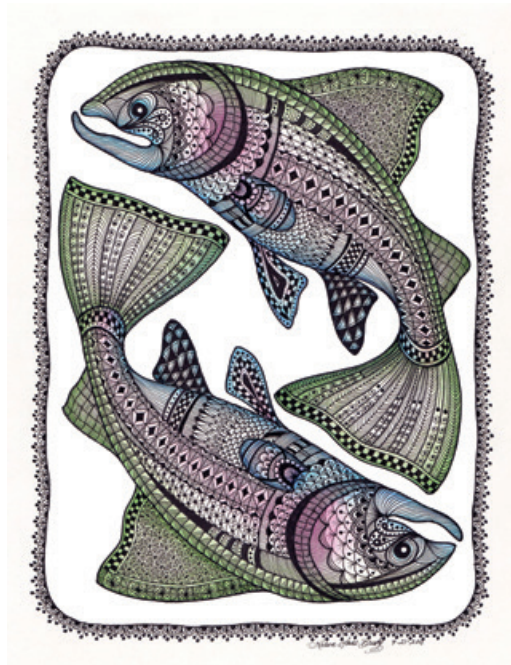
# Karen Anne Brady



Born in Hillsboro, Oregon, USA  
Autodidact  
Works as a freelance artist in Portland, Oregon.  
[IrelandBrady.Blogspot.com](http://IrelandBrady.Blogspot.com)

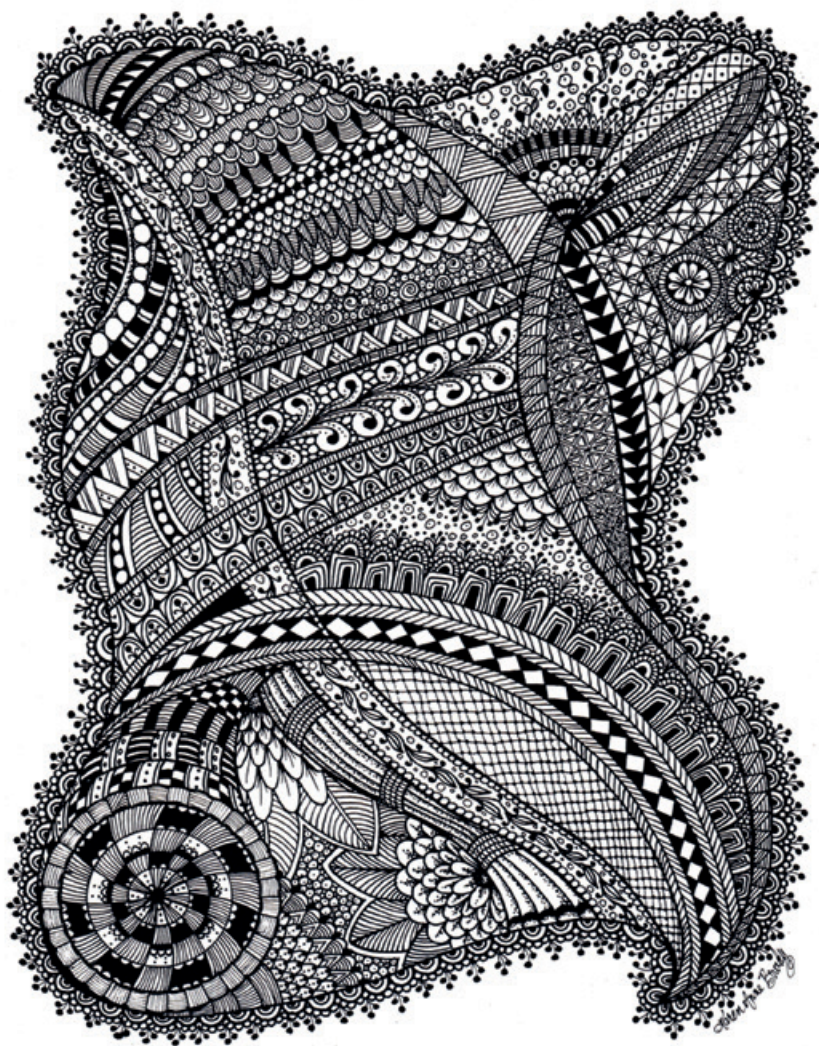
## Ink Tangles

“I use a pencil to flesh out the basic shape. Then I apply ink to outline the design, let it dry and erase all pencil lines. If I am going to include color, I will apply watercolors, colored pencils or a combination of both. Then the fun begins: with a variety of different nib sizes, I begin adding patterns to the form.”





USA





# Kera Till

---



Born in Munich, Germany  
Studied political science  
Worked for various international companies such as Ladurée, Vogue, Glamour, Elle, Tatler and Hermès  
Lives between Paris and Munich  
[www.keratill.com](http://www.keratill.com)

---

## Fashion



I use Pitt Artist Pens for colouring and drawing. The black fineliners are indispensable for drawing outlines. They are also comfortable to write with. For most of my artworks I use watercolours in addition.





Germany



1/50 / 16.11.12



# Christian Jallat



Born in Clermont-Ferrand, France

Artist's name: JALA

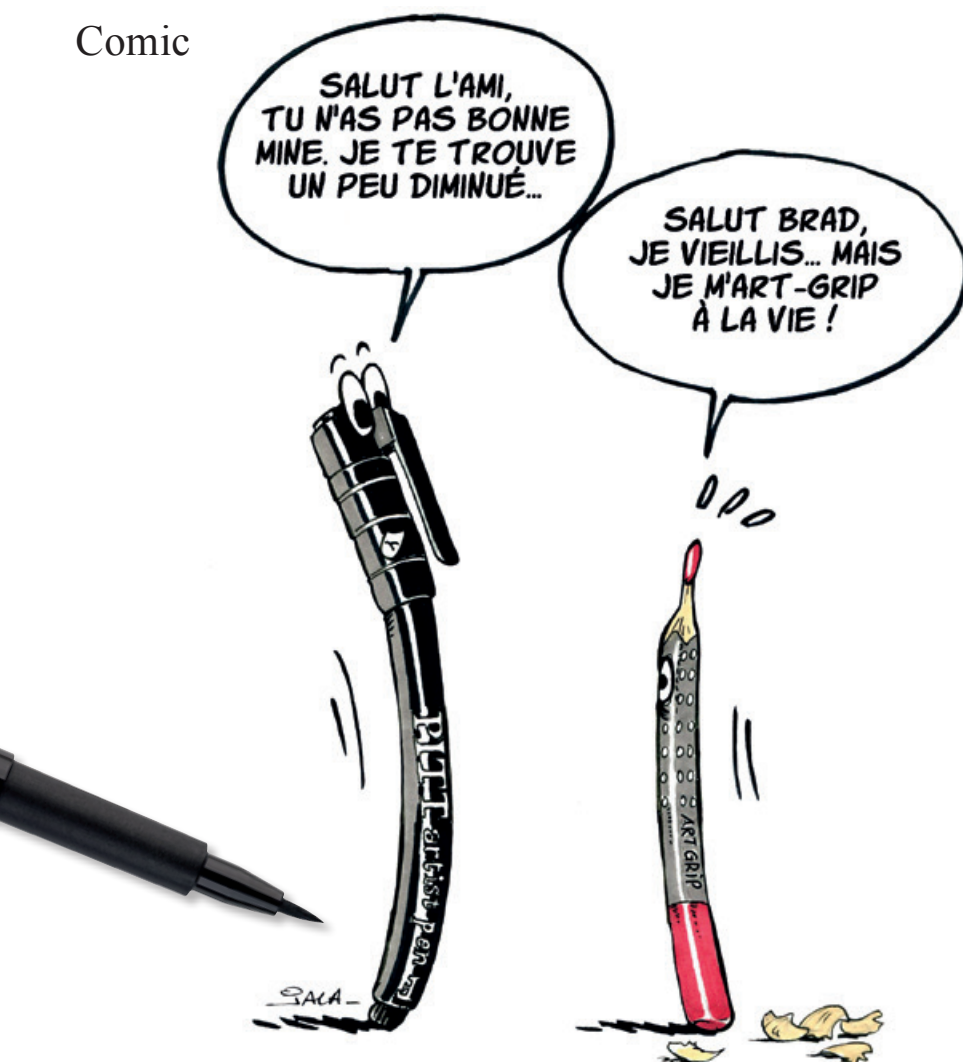
Diploma in Marketing Communications

Freelance artist

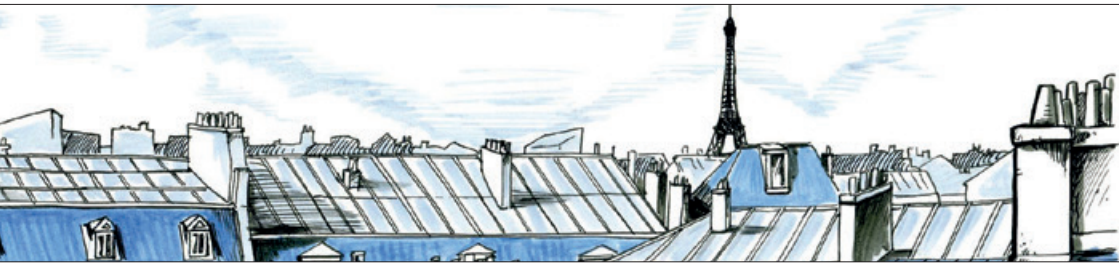
Works for the press, advertising and publishing companies and on events

[www.jala.fr](http://www.jala.fr)

## Comic



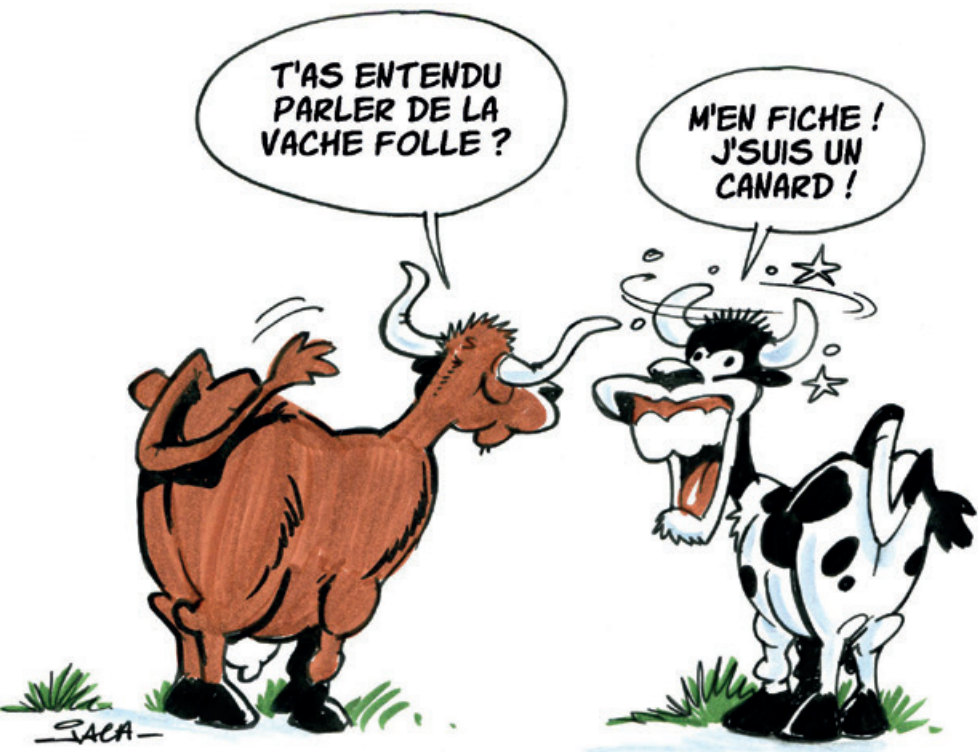




“Paris from the rooftops – I have always been fascinated by this view of the French capital! I exclusively used black, grey and blue Pitt Artist Pens for this illustration. For details and contouring I made use of the fineliner nibs S and F,

effects and larger areas were drawn with the brush nib B.”

“The Pitt Artist Pen replaces both ink and quill and make a stockage of ink super-fluous.”





# Alexander S. Vethers

---



Studied in Hamburg, Germany

Worked for various international companies such as Vogue, Armani, Calvin Klein, Dolce & Gabbana, Columbia Pictures, Vanity Fair, Coty Inc. and Shell Oil

Lives and works in New York

[www.alexandervethers.com](http://www.alexandervethers.com)

---

## Art

The dynamic artworks by Alexander Vethers unite poetic sensuality and aesthetics; they reveal extremely firm and confident strokes. His drawings and his photography have been exhibited in galleries in Berlin, Istanbul, Munich and New York and are part of various international company and private collections.





USA





# Omar Jaramillo



Born in Guayaquil Ecuador  
Studied architecture in Ecuador and in Germany  
Works as architect, landscape architect and painter  
Worked in India, Sicily, Abu Dhabi and Newfoundland  
Correspondent for the online blog Urbansketch.org since 2009  
Exhibitions in Ecuador, Germany, USA, Canada, Italy and France  
[www.omar-paint.tumblr.com](http://www.omar-paint.tumblr.com)

## Painting

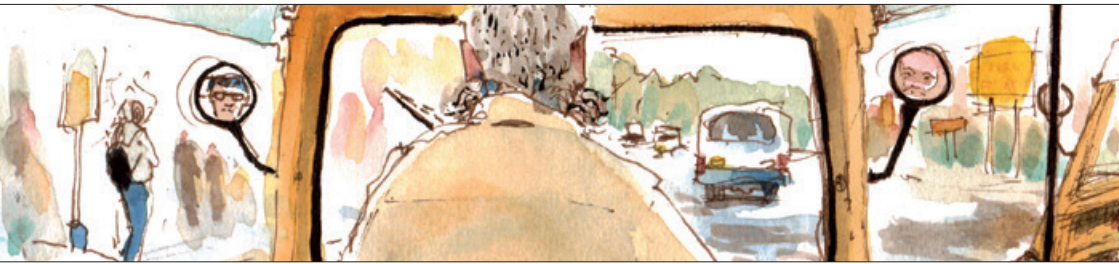
“When I’m on the road with my sketch-book, I need to capture sceneries quickly with a few brushstrokes. I skip sketching with a graphite pencil and use Pitt Artist Pens directly. Faber-Castell India ink

pens are permanent and therefore perfectly suitable for Mixed Media techniques. Later on, I can calmly add watercolours to the drawing.”





## Germany



“I like to use sepia and sanguine as medium tonal values. Many 18th century artists made use of these tones in their

sketchbooks. I love the feeling of following an old tradition.”



# Brigitte Doege

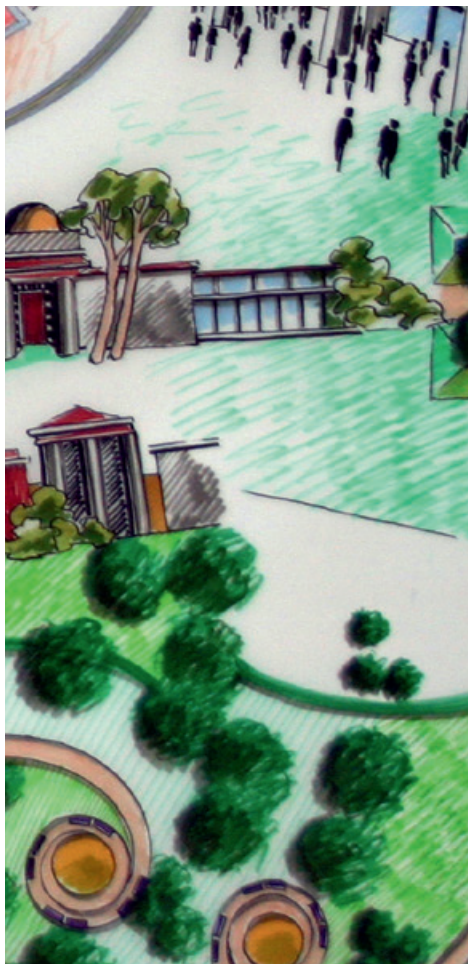


Born in Munich  
Studied painting and textile design at the academy of Fine Arts in Munich  
Freelance painter and designer  
Teaches at Blocher School in Munich, University of Applied Sciences  
Rosenheim and Faber-Castell Academy in Stein  
[www.doege-design.de](http://www.doege-design.de)

## Architecture

“Pitt Artist Pens have a solid but flexible brush nib – like a high-quality paint brush that doesn’t spread apart after a long time of use.”

“The innumerable possibilities of mixing the colours, changing their appearance and layering them are not seizable. They are beyond any rules, especially in their most beautiful harmonies. In a world full of rules, this is what makes the colours especially attractive and fascinating to me.”









# Scott Zhiwei Zhang

---



Born in Anhui, China

Studied at Whitecliffe School of Fine Art, Auckland, New Zealand

Moved back to Beijing in 2011

Works as a freelance artist in painting, drawing, photography and illustration

---

## Illustration

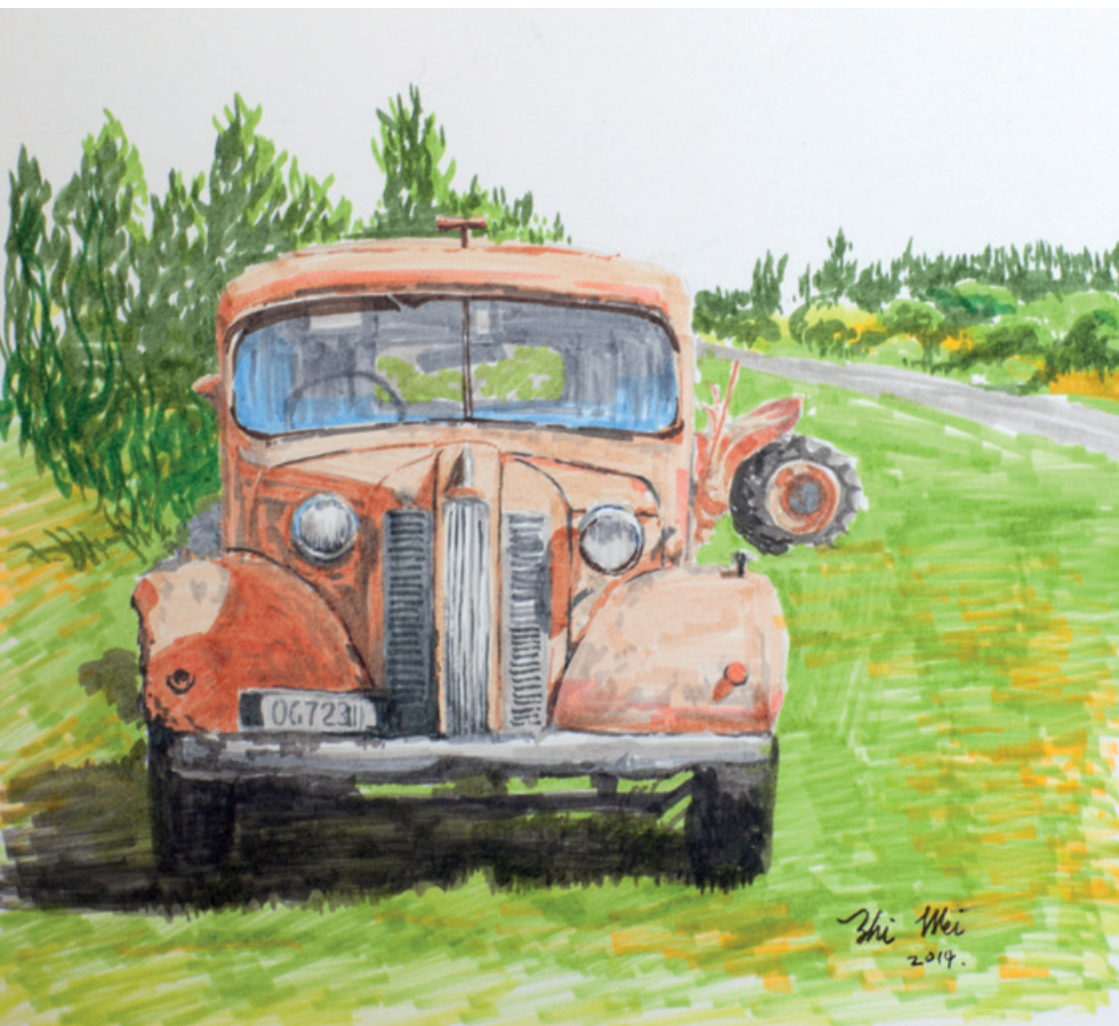
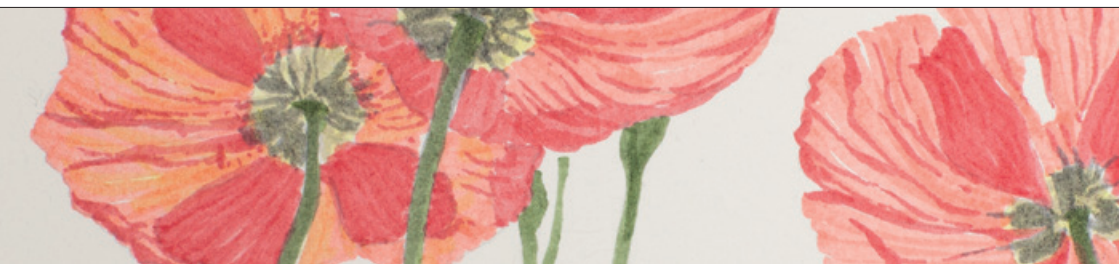


“The Pitt Artist Pen reminds me a lot of my childhood. It is direct, expressive and I have a strong affection to it. The colours are very bright and transparent. Brushworks can smoothly blend them together. Last but not the least they are lightfast. Most of the colours stay brilliant for many years. It is the ideal pen for creative work.”

“A masterpiece requires a lot from art materials: it has to be expressive, light-fast, sometimes portable, and creative.”



China





# Colour chart Pitt Artist Pen brush

## Colours, numbers and GTIN of the Pitt Artist Pen range

### Pitt Artist Pen brush

	Number	Colour	400 540 167 ...	12 ct. Studio box	24 ct. Studio box	48 ct. Studio box	6 ct. Basic	6 ct. Grey	6 ct. Landsc.	6 ct. Terra	6 ct. Skin	6 ct. Pastel	6 ct. Blue	8 ct. Basic	6 ct. Shōjo	6 ct. Shōnen	6 ct. Kaoiro
	102*	cream	...402 3														
	103	ivory	...403 0		•	•					•						
	104	light yellow glaze	...404 7		•	•						•					•
	107	cadmium yellow	...407 8	•	•	•	•										
	108	dark cadmium yellow	...408 5			•				•						•	
	109	dark chrome yellow	...409 2			•	•										
	110	phthalo blue	...410 8	•	•	•	•									•	
	112	leaf green	...412 2	•	•	•											•
	113	orange glaze	...413 9	•	•	•										•	
	114	light skin	...414 6			•					•						
	116	medium skin	...416 0			•					•						
	118	scarlet red	...418 4			•									•		
	120	ultramarine	...420 7			•							•				
	121	pale geranium lake	...421 4	•	•	•											
	125	middle purple pink	...425 2	•	•	•											
	126*	permanent carmine	...426 9														
	127	pink carmine	...427 6		•	•	•									•	
	129	pink madder lake	...429 0			•						•					
	131	medium flesh	...431 3								•						
	132	light flesh	...438 2		•	•					•						•
	133	magenta	...437 5		•	•											
	134	crimson	...434 4			•											
	136	purple violet	...436 8	•	•	•	•									•	
	143	cobalt blue	...443 6		•	•							•				
	146	skyblue	...446 7	•	•	•			•				•		•		
	148	ice blue	...448 1			•						•	•				
	153	cobalt turquoise	...453 5			•											
	154	light cobalt turquoise	...454 2		•	•											
	156	cobalt green	...456 6		•	•							•		•		
	157	dark indigo	...457 3		•	•											
	160*	manganese violet	...460 3														
	161	phthalo green	...561 7			•											
	162	light phthalo green	...462 7		•	•						•					
	167	permanent green olive	...467 2		•	•	•									•	
	169	caput mortuum	...469 6	•	•	•				•							
	170	may green	...470 2			•			•								
	171	light green	...471 9												•		
	172	earth green	...572 3														
	174	chromium green opaque	...476 4			•			•								
	175	dark sepia	...475 7			•											
	177	walnut brown	...477 1							•							
	178	nougat	...578 5														
	180	raw umber	...480 1		•	•				•							•
	184*	dark Naples ochre	...484 9														
	186	terracotta	...486 3							•							
	188	sanguine	...488 7														
	189	cinnamon	...489 4							•	•						•
	192	Indian red	...492 4			•			•								
	199	black	...499 3	•	•	•								•			
	219	deep scarlet red	...419 1														
	220	light indigo	...520 4			•							•				
	223	deep red	...523 5														
	228*	magenta bright	...428 3														
	230	cold grey I	...430 6			•						•					
	232	cold grey III	...432 0	•	•	•		•						•			
	233	cold grey IV	...433 7					•						•			
	235	cold grey VI	...435 1			•		•						•			
	239	lilac	...539 6			•						•					
	247	indanthrene blue	...447 4			•			•								
	264	dark phthalo green	...478 8	•	•	•											
	268	green gold	...468 9			•			•								
	278*	chrome oxide green	...378 1														
	270	warm grey I	...570 9			•											
	272	warm grey III	...472 6		•	•		•						•			•
	273	warm grey IV	...473 3			•		•						•			
	274	warm grey V	...474 0					•									

\* going to be sold out



## Fineliner · Special nibs · Calligraphy · Metallic

### Colours, numbers and GTIN of the Pitt Artist Pen range

Tip/Colour	Number	Colour	400 540	4 ct. Black	4 ct. Black	4 ct. Black	4 ct. Sepia	4 ct. Sang.	6 ct. Black	8 ct. Basic	8 ct. Black	4 ct. Warm	4 ct. Cold
	167 ...			167132	167115	167100	167101	167102	167116	167107	167137	167005	167006

## Pitt Artist Pen Fineliner

[illegible]

## Pitt Artist Pen Fineliner Monochrome

XS	199	black	...099 5	•	•				•		•		
S	175	dark sepia	...175 6				•						
S	188	sanguine	...188 6					•					
S	199	black	...199 2	•	•	•			•		•	•	
F	175	dark sepia	...275 3				•						
F	188	sanguine	...288 3					•					
F	199	black	...299 9	•	•	•			•			•	
M	175	dark sepia	...375 0				•						
M	188	sanguine	...388 0					•					
M	199	black	...399 6		•	•			•		•	•	
B	175	dark sepia	...475 7				•						
B	188	sanguine	...488 7					•					
B	199	black	...499 3	•		•			•			•	

### Pitt Artist Pen Special Nibs

1.5	199	black	...890 8							•	
SB	199	black	...891 5							•	
SC	199	black	...892 2							•	
BB	199	black	...699 7								

## Pitt Artist Pen Calligraphy

[illegible]

### Pitt Artist Pen Metallic

[illegible]



