



FABER-CASTELL  
since 1761



# Pitt Artist Pen *Calligraphy*



## *What is calligraphy?*

Learning to write artistically

## *Tools and materials*

Perfectly equipped

## *The chisel tip*

Exciting upwards and downwards strokes

## *The font*

Alphabet with the chisel tip

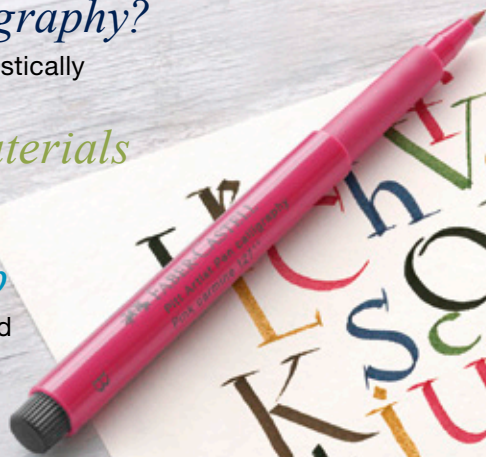
## *Mixed Media*

Combine strong techniques

## *Creative design*

Let yourself be inspired

**12** colours  
*with the calligraphy tip*



Climate protection starts with the product –  
global CO<sub>2</sub> neutrality is unique in the writing  
instrument industry

Our production  
is climate neutral

TÜV Rheinland has certified that the company is CO<sub>2</sub> neutral worldwide. The company's eco-forests in Brazil and Columbia actively contribute to protecting the environment. Instead of touting individual "green products", Faber-Castell minimises its environmental footprint throughout the entire life cycle of its product range. Faber-Castell products are green because they are long-lasting, often refillable as well as pollutant-free, and come from CO<sub>2</sub>-neutral production. The use of bio and recycled plastics also improves the "green footprint" of Faber-Castell.





## Faber-Castell stands for quality

Faber-Castell is one of the world's leading manufacturers and marketers of quality products for writing, drawing and creative design – the brand name is world-famous. In the core area of wood cased pencils, the group is the most important and oldest manufacturer in the world with a production capacity of more than 2 billion pencils and coloured pencils.

Regardless of personal motivation and individual skill level – the new Creative Studio concept allows both beginner and hobby artists to express their creativity and offers them everything they need to do so: high-quality products for drawing and painting, a perfectly matched colour range, material that inspires and fosters, and an incomparable versatility in terms of uses.





**Creative  
Studio**



**Let yourself  
be inspired**

We want to inspire you –  
with our finest quality and rich colours.

Faber-Castell has combined all the advantages of the artist pens in a modern, simple india ink pen - the Pitt Artist Pen. The highly pigmented and lightfast india ink pen is perfectly suited for calligraphy.

Have you been fascinated by calligraphy for a long time, but haven't had the courage to try the art of beautiful writing yourself?

In this brochure, we aim to take away the initial fear of starting calligraphy and outline how to handle the Pitt Artist Pen. You will learn how to create little pieces of art in just a few steps with the Pitt Artist Pen. Practice and you will quickly be rewarded with your own success story. Get started now and give all the techniques and tips here a try!





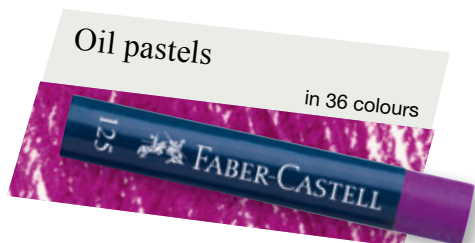
# The Creative Studio

assortment

*Colours for  
expressive  
drawings*

Oil pastels

in 36 colours



*Goldfaber*

Colour pencils in 48 colours



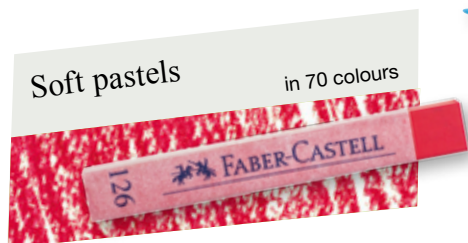
*Goldfaber Aqua*

Watercolour pencils in 48 colours



Soft pastels

in 70 colours



*Goldfaber*

Graphite pencils in 10 degrees of hardness



Pitt Artist Pen

India ink pens in 67 colours



## Good to know

Faber-Castell uses a standardised colour numbering system for its products. For example, this allows a certain colour from the Goldfaber Aqua range to be used with the same colour from the range of oil pastels or soft pastel crayons without any problem.





Pitt  
Artist Pen



# What is *Calligraphy*

The word “calligraphy” comes from the Greek and means the art of beautiful writing. Centuries ago, it was already used by mankind all over the world as a way of communicating with each other. Whether as cave paintings, hieroglyphics, asian letterings or in the form of Arabic and western font, calligraphy was and is regarded as the art of communication.

Discover your calligraphy skills and express your personality with unique messages.



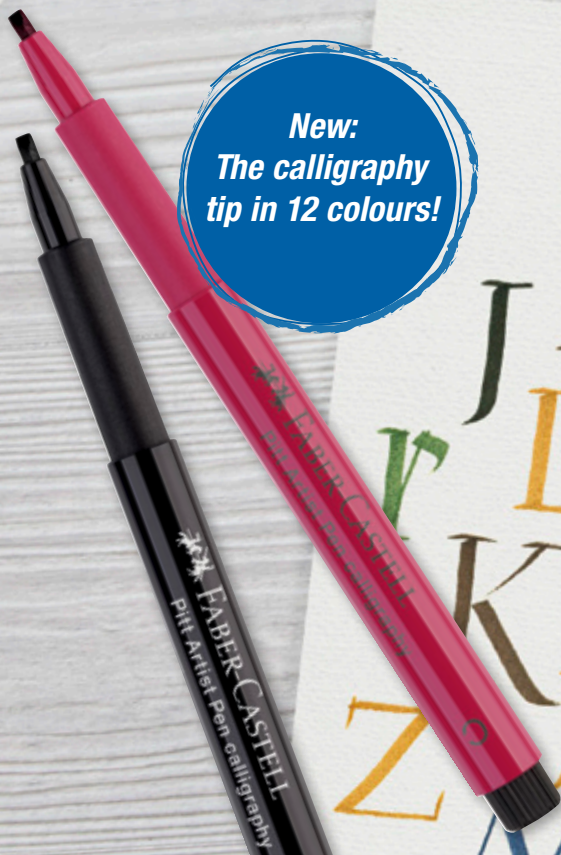


## What is calligraphy at Faber-Castell?

In this brochure, we will introduce you to the world of writing beautifully. With our Pitt Artist Pen, we want to show you the ways you can create real works of art from simple things in your own personal style. There are no limits to your imagination!



**New:**  
*The calligraphy  
tip in 12 colours!*






## Tools and materials



Perfectly  
equipped!

### The basic equipment at the workstation

- ☒ Pitt Artist Pens
- ☒ Pencils
- ☒ Drawing board
- ☒ Ruler
- ☒ Eraser + sharpener
- ☒ Paper



Just minor preparations can help you to express yourself freely at your workstation. Righthanded writers can arrange all the materials on the right side of the workstation. Left-handed writers can do the opposite.

A tilted surface or tilted drawing board is great for ensuring that you have a perfect view of your drawing. It's best to fix a few sheets of paper to the drawing board as an underlay to provide a stable base.



my art  
"Speaks"  
where words  
cant explain



abcdefghijklmnopqrstuvwxyz  
abcdefghijklmnopqrstuvwxyz  
abcdefghijklmnopqrstuvwxyz







**This is how to do it:**  
Use a triangular set square instead  
of a ruler to draw guiding lines for  
the slant of the letters

Softer grades like 4B are great  
for the first practice runs

Hardness grades like 2H are  
perfect for delicate guiding lines

Set off on a  
calligraphy  
adventure



## Tools and materials

### The paper

For calligraphy to work, it is important to use the right paper. Layout paper is great for practising due to its extremely smooth surface. It is also slightly transparent, meaning that guiding lines drawn previously on a sheet of paper placed underneath the layout paper are visible.


Because hot-pressed watercolour paper has a smooth surface texture, it is also perfect for calligraphy drawings. Drawing cardboard with a smooth surface is ideal for beginners in the field of calligraphy. Cold-pressed papers, on the other hand, have a rough surface.

Good to know:

Hot-pressed means that the paper runs through heated rollers. This smooths the paper. Cold-pressed paper is pressed without the influence of heat. This gives the paper a rough surface.

### Guiding lines

To give the letters a uniform appearance in calligraphy, it is advisable to use guiding lines. Practice paper with printed guiding lines is already available for this. But you can also draw in guiding lines easily yourself.



**Tip:**  
Start with simple basic shapes like curves, crosses or circles to develop a feeling for the properties of the chisel tip.

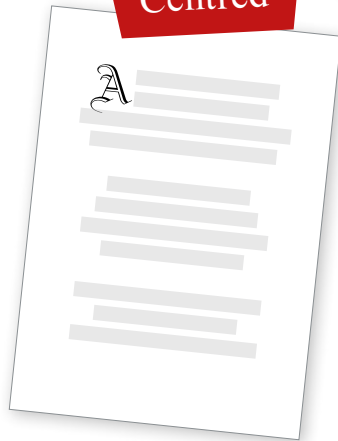


# Layouts

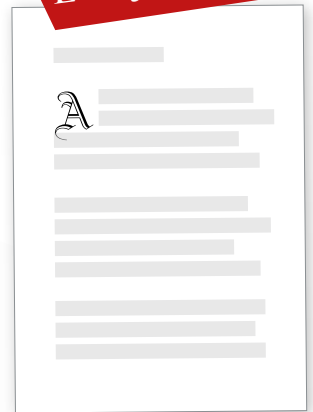
The right layout plays an important role in calligraphy. Centred texts are particularly visually appealing. Here, it is important to ensure that the bottom edge is wider than the other edges. The top and side edges should have roughly an equal width.

If you choose watercolour paper or drawing cardboard, you have to draw the guiding lines directly on the paper.

## Centred



## Left-justified



## Shape



Texts can be combined with different font thicknesses and decorative elements



## The chisel tip

Ideally, you should practice with a pencil first. A pencil is also great for sketching out a letter later.

## The chisel tip

The chisel tip creates the traditional appearance of calligraphy: Lettering created through a combination of thin and thick lines. This tip version is used in particular in western and Arabic calligraphy. The chisel tip can write with both the wide side and with the corner.

## The correct holding position

To write, hold the pen with the index finger and thumb and support it with the middle finger. The pen should be guided firmly and controlled, but also comfortably.

## Even pressure

With the chisel tip (C), the pressure should always be even and should not vary. Ensure that a light, even pressure is applied on the tip.





A calligraphy practice sheet featuring various exercises. At the top left, a red ruler is partially visible. The sheet includes a series of green 'C' characters, a row of green squares, a dotted line, and a row of green plus signs. A green pen lies diagonally across the right side. The background has faint geometric patterns like circles and squares.

## Writing rhythm

The rhythm is particularly important in calligraphy. I.e. the time taken to draw each stroke should be equal. To work in a controlled matter, give yourself lots of time in the beginning and gradually increase the speed as you progress.

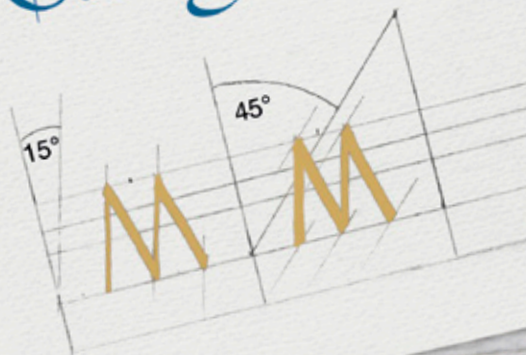
## Letter spacing

The width of a letter is always determined by the font type and the word structure. Two narrow letters placed next to each other, such as a “double l”, require more space or distance from the neighbouring letters than “A”, for example. The distances between the letters should always be chosen so that the lettering has a harmonious appearance.

## The writing angle

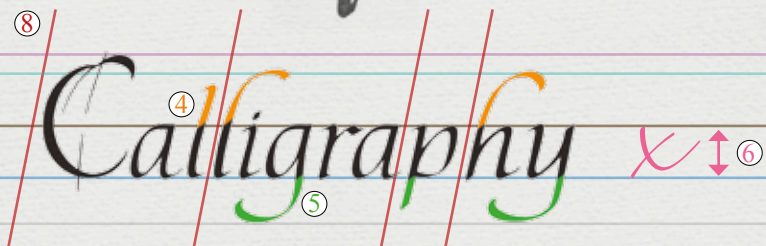
To achieve an even and harmonious result, it is important to work at a consistent writing angle. The bigger the angle, the stronger the contrast between the wide and narrow lines. This combination of different stroke widths determines the character of a font style.

X Calligraphy  
✓ Calligraphy



1x1 of  
calligraphy

1x1 of



## 1 Baseline

The line on which the body of a letter is positioned.

## 2 Top line

The guiding line that defines the height of an ascending letter.

## 3 Top line for uppercase letters

The guiding line that defines the height of an uppercase letter.

## 4 Ascender

The part of a letter between the 7 x-Line and the 2 top line.

## 5 Descender

The part of a letter that is below the 1 baseline.

## 6 x-height

The height of a letter or the part of the font between the 1 baseline and the 2 top line. (The height of the lowercase "x")

## 7 x-line

The guiding line that determines the correct position for the upper boundary of the 6 x-height.

## 8 Incline line

The guiding line that specifies the correct incline.







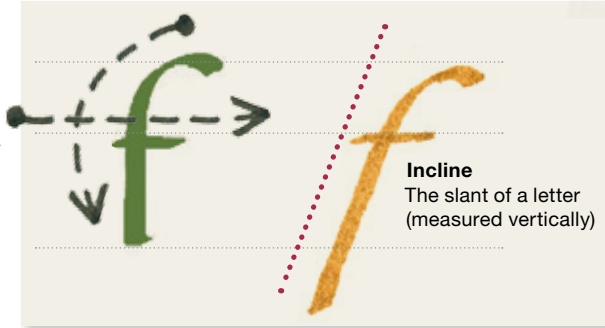
### Vertical stroke

A stroke that runs downwards in the direction of the baseline or of the bottom line.



### Crosslink

Horizontal downstroke that forms part of the letter



### Incline

The slant of a letter (measured vertically)

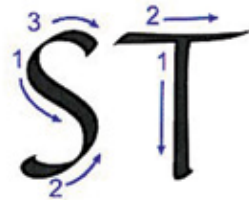


### Tip width

The width of the writing utensil.  
A letter, that is written four tip widths high, appears twice as powerful as a letter that is written with the same pen eight tip widths high.

### Characteristic style

The direction and sequence of the strokes that make up a letter.



### Hairline

An extremely thin line.

### Decoration

A non-structural decorative element of a letter.



α A

Alphabet  
with the  
chisel tip

*Gothic italics*

Gothic lettering is actually a family of fonts. With all these fonts, the curves, particularly in the lowercase letters, are practically eliminated. Curves are made up of individual strokes instead. This creates an even, rhythmic typeface. Gothic lettering is particularly well suited for beginners to calligraphy. The uppercase letters add variety and can have extremely vibrant curves depending on the type of Gothic font.

This lettering style developed into hand-written lettering in the late Middle Ages. Gutenberg used it as a template for his moving letters and, in Germany, Gothic fonts remained popular in printing until the start of the 20th century.

Traditionally, Gothic fonts are written perpendicular to the baseline. Like any other font type, Gothic lettering also works just as well in italics. The incline gives the font an additional elegant dynamic element.

## Characteristics

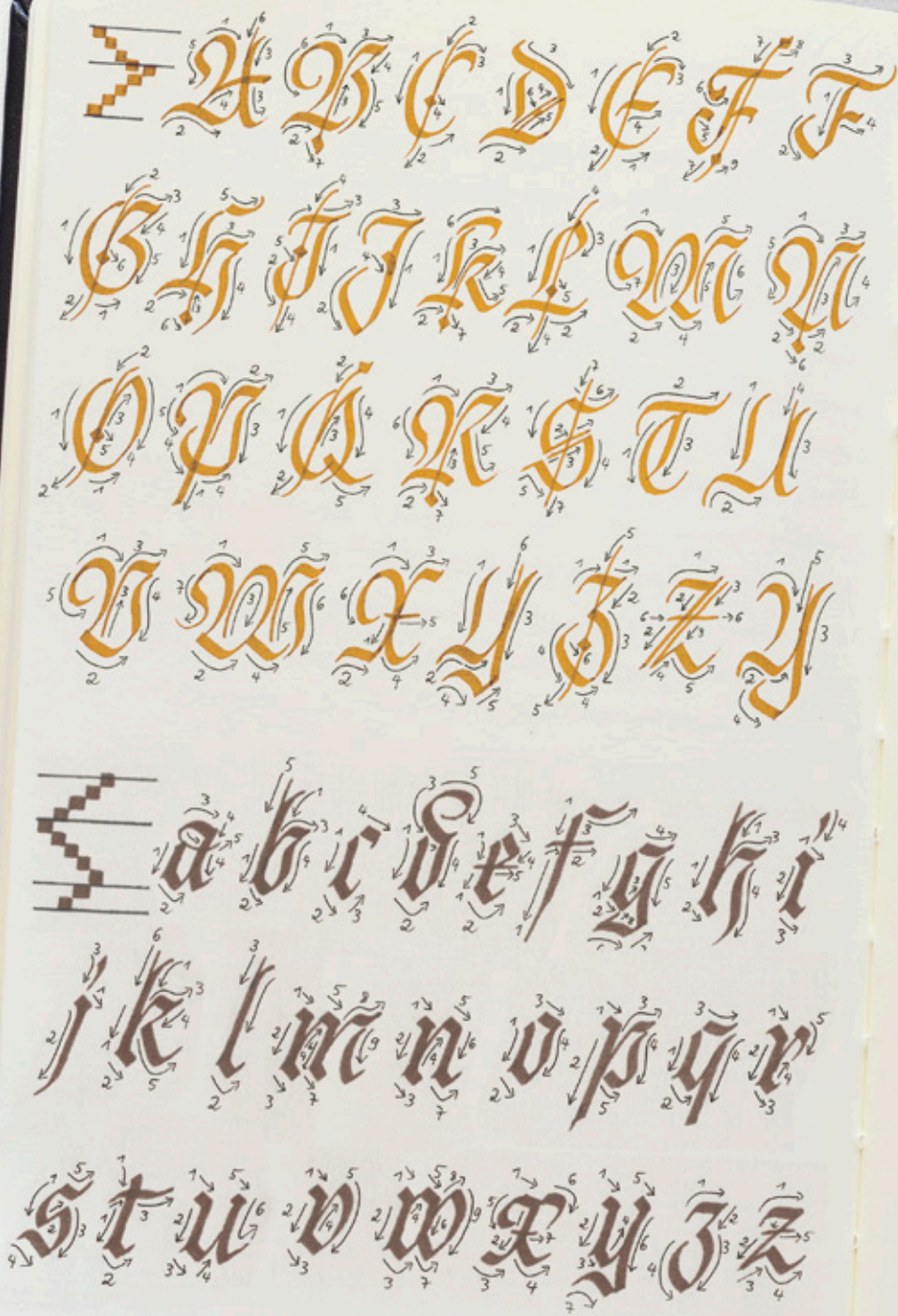
x-height:	5 tip widths
Ascender:	3 tip widths
Descender:	2 tip widths
Incline:	vertical or italics

A striking characteristic is the so-called elephant's trunk that acts as decoration on many letters (A, B, M, N, R, W).



Some letters are given additional visual emphasis with a thin centre line that can be written with the edge or a corner of the Pitt Artist Pen C.





α A



**Tip:**

You can also develop freestyle fonts like these yourself by merging two font styles you know well. This is precisely what we have done with this font: some shapes of the uppercase letters are derived from a Uncial font, the lowercase letters were inspired by a Gothic Bastarda style.

*Alphabet  
with the  
chisel tip*

Freestyle

This font created by calligrapher Joachim Propfe can be written easily with the Pitt Artist Pen C, because the individual lines in this alphabet do not always have to be joined together. It's OK to leave small gaps. This gives the font a lighter feel and makes writing easier, because the previous stroke doesn't always have to be joined with completely. The verticals aren't dead straight on any letter, but follow a slight curve, which is usually easier to write than a dead straight line. The fine lines are created by only using one corner of the chisel tip.

This font type permits a multitude of deviations in the execution of the individual strokes – angles and curves don't always have to match completely. These tolerances in particular are what make the lettering vibrant and fresh and show that it has been written by hand.

Leave gaps between lines to give the font a lighter appearance



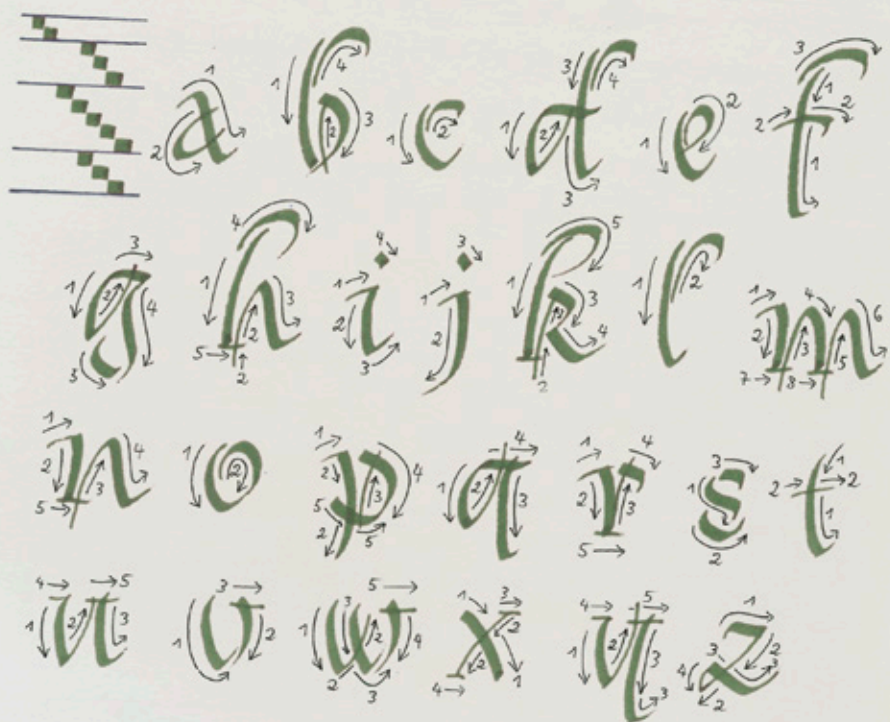
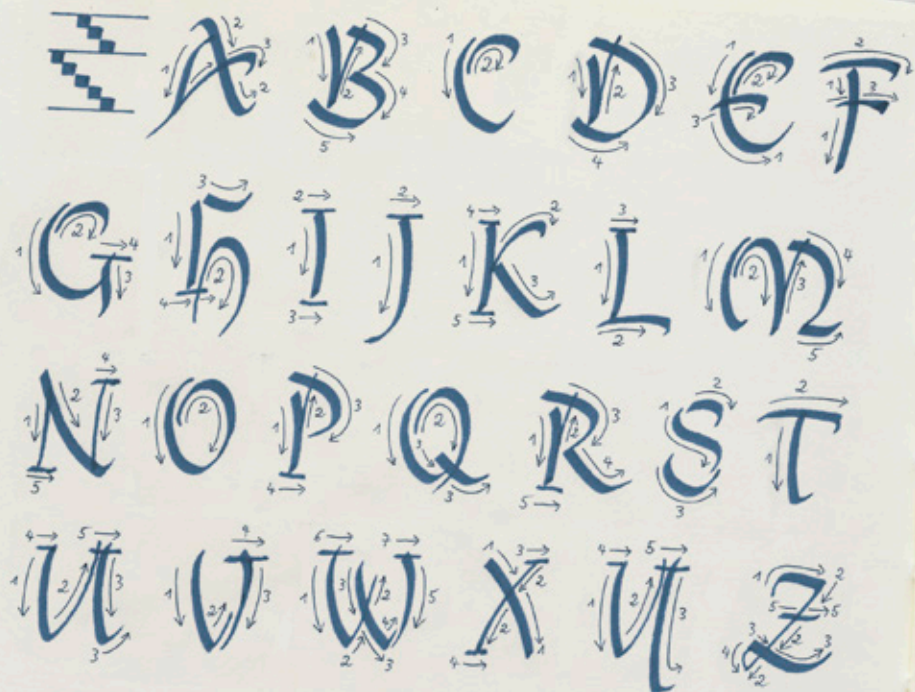
Experiment with slight curves instead of exact straight lines

## Characteristics

x-height:	5 tip widths
Ascender:	3 tip widths
Descender:	tip widths
Incline:	as desired









## Combine strong techniques

### **Decorations and variations with the chisel tip**

Get creative with the chisel tip: Mix the uppercase and lowercase letters as you please or give the font an undulating or curved flow in place of straight lines, for example.


Particularly impressive effects can be achieved with a combination of brush and chisel tip. This creates exciting contrasts between the soft- organic strokes of the brush and the clear lines of the chisel tip.



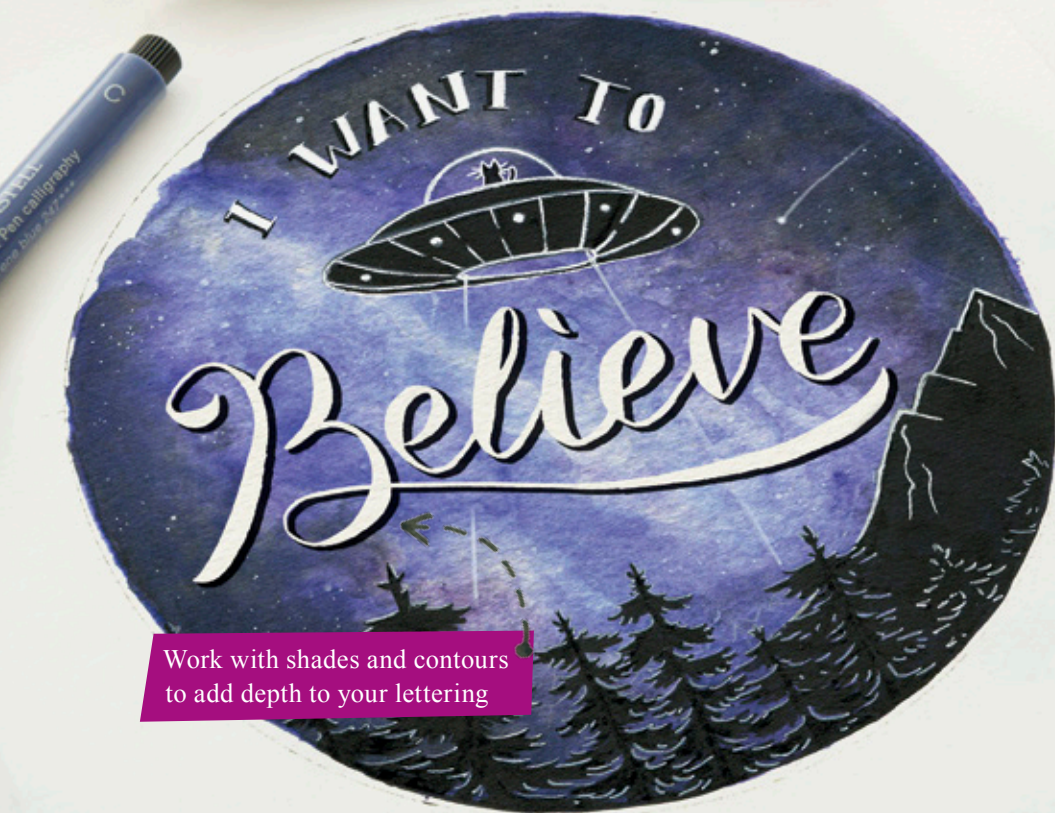
***Mix yourself  
an individual  
writing style!***







Why not try combining the  
Pitt Artist Pen with watercolours?



Work with shades and contours  
to add depth to your lettering

## An occasion for calligraphy

Creative writing not only adds a great personal touch to your correspondence, such as letters, greeting cards and invitations, but is also a great way of adding new calligraphy styles to your repertoire.

Use a combination of contemporary block letters and traditional calligraphy with the chisel tip to send unique messages.

Try writing the headline larger and the rest of the text in a different colour and much smaller. Experiment with different layouts such as left-justified or centred. Also try using italics!





## Letters, cards and invitations

Surprise your friends and family with individually designed cards. Emphasize your lettering with a calligraphy border or a hand-drawn picture.

Use interesting materials, paper and accessories to add a festive touch to a special occasion.



### Tip:

Use colour worlds to create a harmonious overall image.





*Creative  
design*

With home-made labels, even boring jam jars become a real eye-catcher!

Let yourself be inspired

A combination of block capitals and a handwritten style creates an extremely modern look

Be creative and keep your eyes open!  
Everyday life is full of things that you could make even more beautiful with calligraphy: An old note book, kitchen planner or even mobile phone cases, for example.

#### **Charms and labels**

Why not give your loved ones a home-made gift!  
Whether chocolates, jam, pesto or biscuits:  
In beautiful packaging with a personal message  
- it's almost a shame to unpack and eat them.





FABER-CASTELL  
since 1761



## The road to success

Practice makes perfect:

All beginnings are difficult! You can only develop your calligraphy skills with lots of practice and by applying the various tips and tricks. You will start to see progress in no time at all.

Push yourself and dare to take on challenging projects. Design a postcard or a sign with your favourite saying. There are no limits to your creativity!

Surf the Internet or browse through magazines for inspiration and put your ideas down on paper.



### Idea:

Combine several strokes and decorative elements together creatively and create letter animals or flowers in an oriental style.





12 colours

# Pitt Artist Pen *Calligraphy*



The calligraphy  
tip in 12 new  
colours!

16 75 04  
16 75 05  
16 75 06  
16 75 08

Tip / Colour-No.		Colour	40 05 40 167...	light fastness	Sorting / Art. No.		
C	101	white	...501 3	***	•	•	•
C	127	pink carmine	...527 3	**		•	•
C	174	chromium green opaque	...574 7	***		•	•
C	175	dark sepia	...575 4	***		•	•
C	178	nougat	...978 3	***		•	
C	180	raw umber	...580 8	***			•
C	188	sanguine	...588 4	***	•		•
C	247	indanthrene blue	...547 1	***	•		•
C	268	green gold	...568 6	**		•	•
C	272	warm grey III	...972 1	***		•	
C	273	warm grey IV	...573 0	***			•
C	199	black	...599 0	***	•	•	•





16 75 08



16 75 04



16 75 05



16 75 06

